

Instruction

ART MONITOR HEADPHONES ATH-A900XLTD



Thank you for purchasing Audio-Technica ATH-A900XLTD Art monitor headphones.
Read these instructions before using the headphones, and keep the manual for future reference.

CAUTION

Please read these cautions before using your headphones.
To ensure safety, observe all cautions while using this equipment.

Warnings

- Never use the headphones while driving a car, riding a motorcycle or bicycle or operating any other vehicle.
- Do not use the headphones in places where the inability to hear ambient sound presents a serious risk (such as at railroad crossings, train stations, construction sites or on roads where vehicles and bicycles are traveling).
- To prevent damage to your hearing, do not raise the volume too high. Listening to loud sound for an extended period may cause temporary or permanent hearing loss.
- Discontinue use if skin irritation results from direct contact with the product.
- Do not disassemble, modify or attempt to repair the headphones.
- Please do not use the headphones without the Wing Supports as this could cause injury.

Cautions

- To ensure compatibility and correct usage, always consult the user manual of any device before connecting the headphones to it.
- On public transport systems or in other public places, keep the volume low so as not to disturb other people.
- Please minimize the volume on your audio device before connecting the headphones in order to avoid hearing damage from sudden exposure to excessive volume.
- When using this product in a dry environment, you may feel a tingling sensation in your ears. This is caused by static electricity accumulated on your body, not by a headphone malfunction.
- Do not subject the headphones to strong impact.
- Connect /disconnect the cord by holding the plug. Pulling directly on the cord can result in a broken wire and the risk of electric shock.
- Do not wrap the cord around a rack, furniture or other object. Do not allow the cord to be pinched.
- Do not store the headphones under direct sunlight, near heating devices or in a hot, humid or dusty place.
- Prolonged exposure to ultraviolet rays (especially direct sunlight) may cause the headphones to fade in color.
- Please do not expose the headphones to excessive stress or pressure, which could result in damage or deformation.
- To clean the headphones, wipe the soiled area with soft cloth. Do not use alcohol, thinner or other solvents. Take care to keep the plug and adapter clean. A dirty adapter or plug could result in unwanted noise.

- Please purchase the appropriate conversion plug adapter if you need to connect to other than 6.3mm and 3.5mm stereo headphone jacks.
- Lengthening the headphone cord requires a separate extension cord available from your dealer.

Cleaning

Get into the habit of regularly cleaning your headphones to ensure that they will last for a long time. Do not use alcohol, paint thinners or other solvents for cleaning purposes.

●Cleaning the headphones

Use a cleaning cloth to wipe away dirt on the headphones. When cleaning the housing with a cloth, do not apply strong force. Dust the surface first, and then wipe the surface gently using a dry cloth.

●Cleaning the cords

If the cords have become soiled (by perspiration, for instance), wipe them with a dry cloth immediately after use. Using cords which are dirty may cause them to deteriorate, become hard and give rise to problems.

●Cleaning the plug

Using the plug when it is dirty may cause intermittent sound or noise. When the plug is dirty, wipe it with a dry cloth.

●Cleaning the earpads and headpads

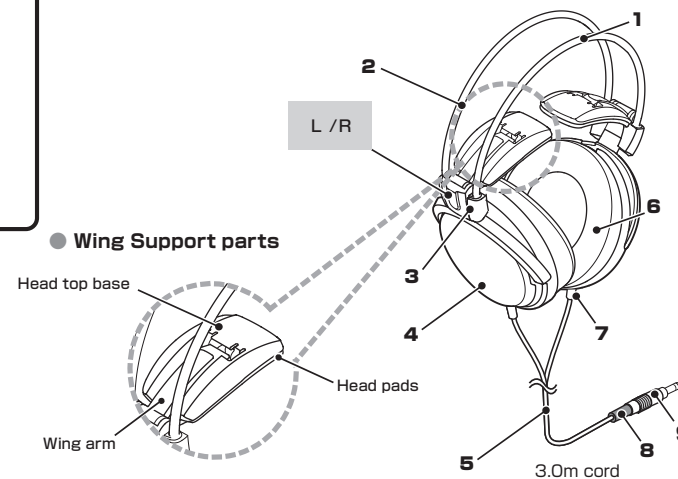
To clean, wipe with a dry cloth. Earpads and headpads may fade if sweat or water dries on them. If the earpads get wet, we recommend wiping them with a dry cloth and allowing them to dry in the shade.

- For long-time storage, keep the headphones in a well-ventilated place without high temperatures and humidity.
- The earpads and headpads deteriorate over time due to use or storage. For information about replacing earpads and headpads or other parts, or for information about other serviceable parts, contact your Audio-Technica dealer or service center.

Part names

Please confirm each part before using this headphone.

1. Head band
2. Wing Support (See below)
3. Joint
4. Housing
5. Cord
6. Earpads
7. Cord bushing for main unit
8. Cord bushing for plug
9. 3.5mm gold-plated stereo mini-plug

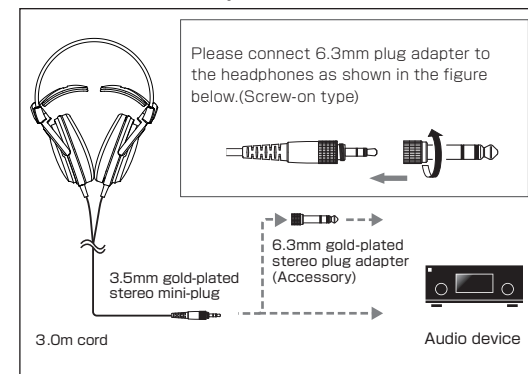


How to use

1. Minimize the volume of each sound device, then connect the headphones to the headphone terminal.
2. Please make sure to position the earpads correctly (L/R position and with the earpad covering the whole ear).
3. Turn on your audio device, and adjust volume as necessary.

※Please also read instruction manual of audio device.

Connection examples



Specifications

Type	: Closed-back dynamic
Driver	: 53 mm, OFC-6N bobbin-wound voice coil
Output sound pressure level	: 101 dB/mW
Frequency response	: 5~40,000 Hz
Maximum input power	: 2,000 mW
Impedance	: 42 Ω
Weight (without cord)	: 340 g

Plug	: 3.5mm gold-plated stereo mini-plug
Cord length	: 3.0 m
Accessory	: 6.3mm gold-plated stereo plug adapter
●Optional	: Sold separately earpads

(For product improvement, this product is subject to modification without notice.)

*Due to limited production of the ATH-A900XLTD headphone, the replacement parts are in limited supply. When the stock of the ATH-A900XLTD parts is depleted, only the ATH-A900X parts will be available.



Audio-Technica Corp.

2206 Naruse, Machida, Tokyo 194-8666, Japan

©2013 Audio-Technica Corp.

